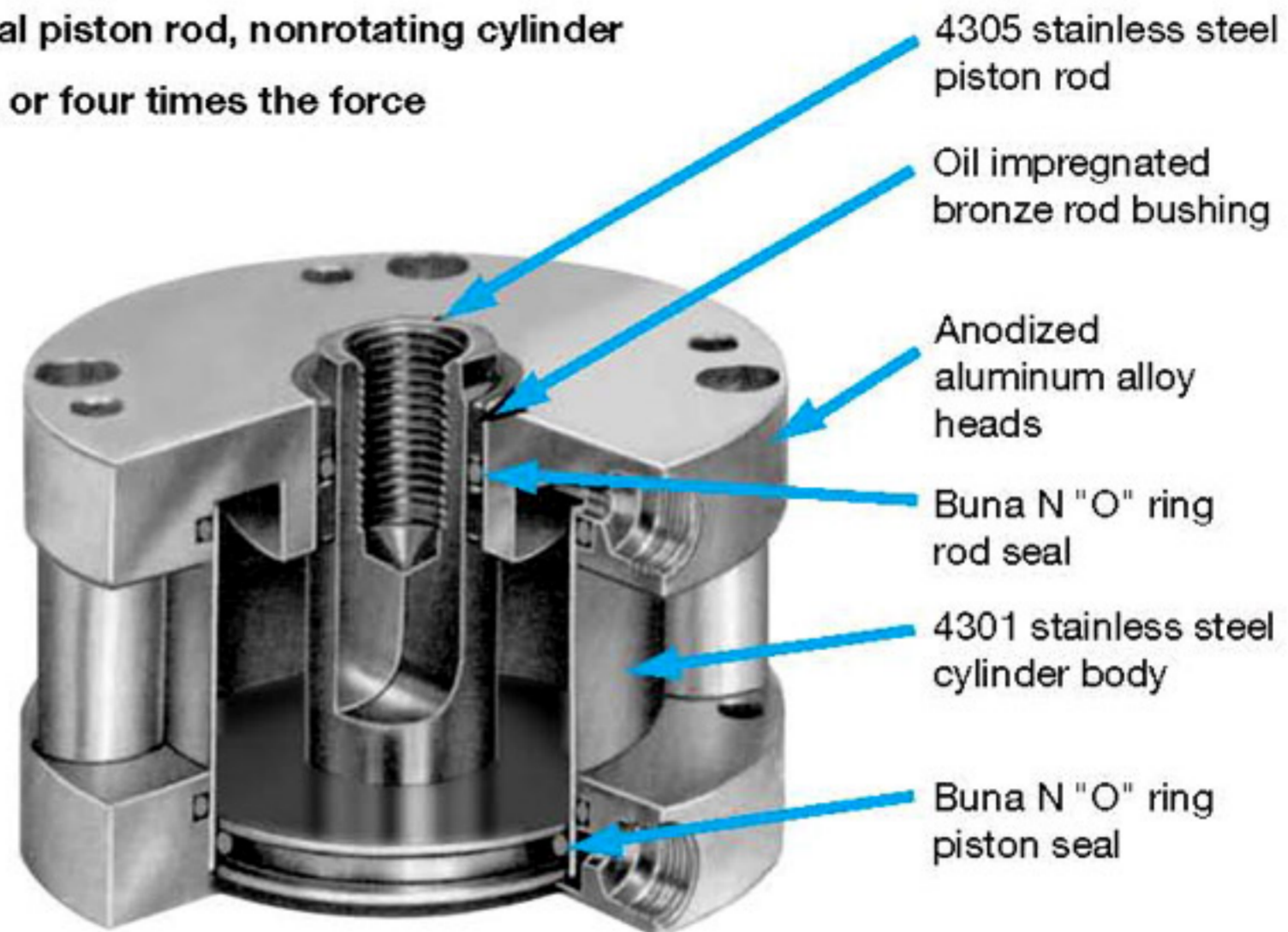


Metric Flat Cylinders

FLAT-1 FITS RIGHT IN!

Flat-1 cylinders were designed with space savings in mind. Five models offer five ways to save space.

- Flat-1, the original round cylinder
- Square Flat-1, for additional mounting variations
- Flat-II, the round, dual piston rod, nonrotating cylinder
- Square Flat-II, the square, dual piston rod, nonrotating cylinder
- FM2/FM3/FM4 for two, three, or four times the force in a single cylinder
- FMP for three positions



Space savings without sacrificing quality means better performance and longer cylinder life. Flat-1 offers these quality features:

- 4301 stainless steel (X5 CrNi 18.9) cylinder body with a mirror finish I.D. Stainless steel fights corrosion and scoring from dirt particles. The result is longer piston seal life.
- Oil impregnated bronze rod bushing is standard in all models. No sacrifice of bushing length to save space.
- Ground and polished 4305 stainless steel (X12 CrNi 18.8) piston rod.
- High strength piston to rod connection.
- Precision machined, anodized aluminum alloy heads.

Approximate Power Factors (For all models except FM2, FM3, FM4)

14mm	=	15 N/bar
19mm	=	28 N/bar
27mm	=	57 N/bar
38mm	=	113 N/bar
50mm	=	196 N/bar
63mm	=	311 N/bar
76mm	=	453 N/bar
101mm	=	801 N/bar

For example, a 14mm bore model FM-0225 will exert a force of approximately 75N when the supply pressure is 5 bar.

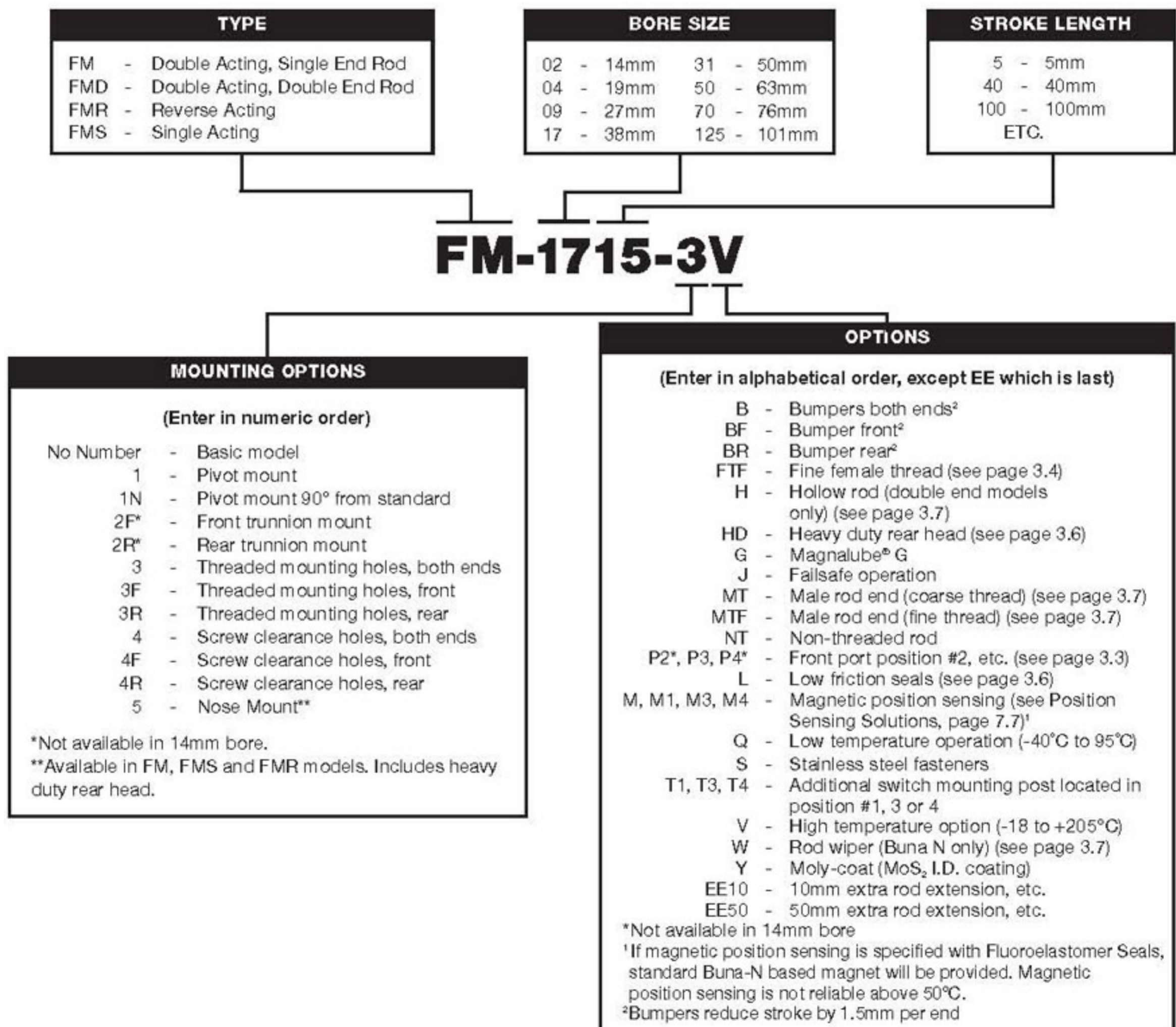


- Body — 4301 Stainless Steel
- Heads — Anodized Aluminum Alloy
- Piston Rod — Ground and Polished 4305 Stainless Steel
- Seals — Buna N (High temperature seals optional)
- Rod Bushing — Oil Impregnated Bronze
- Spring Forces — See Page 3.7
- Pressure Rating — 14 Bar Maximum (Air only)
- Temperature Rating — From -25°C to +65°C

Buna N seals with a temperature range of -25°C to +65°C are standard in all Bimba air cylinders. Fluoroelastomer seals rated for higher temperature applications are available. If cylinders are operated below -18°C for extended time periods, special modifications may be required. Special seal materials are available upon request.

How to Order

The Model Number for all Flat-1 cylinders consists of three alphanumeric clusters. These designate type, bore size and stroke length, and mounting and special options. Please refer to the charts below for an example of Model Number FM-1715-3V. This is a double acting, 38mm bore, 15mm stroke cylinder with threaded mounting holes both ends and high temperature option.



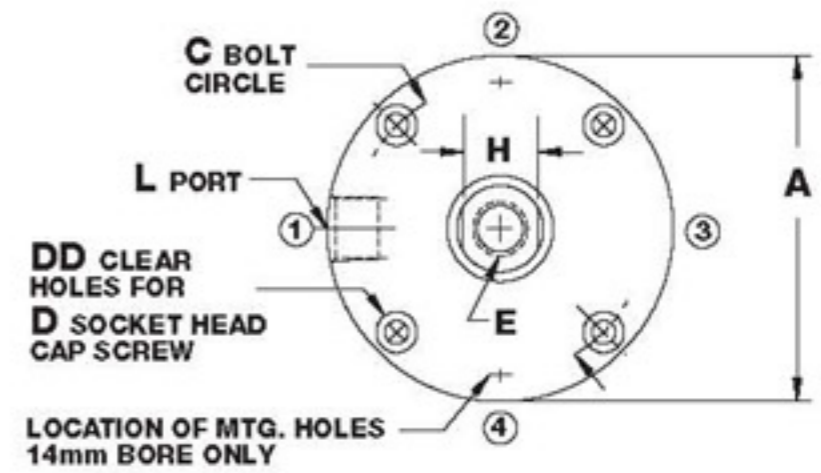
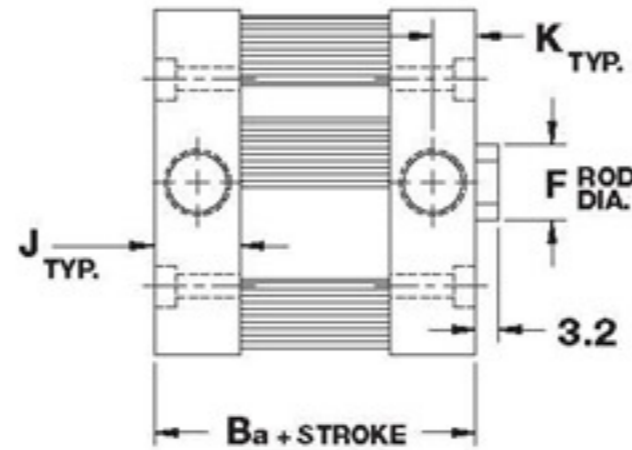
Magnalube® is a trademark of Carleton-Stuart Company.

Basic Models

Model FM

(Double Acting, Single End Rod)

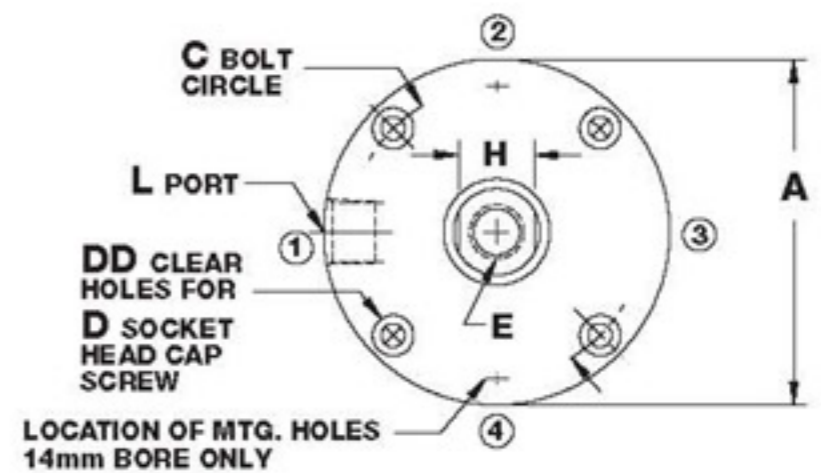
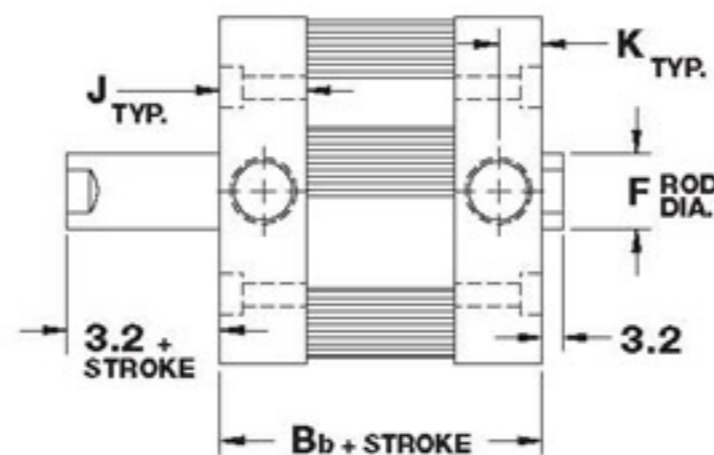
Standard strokes
3.2mm, 5, 10, 15, 20, 25, 30, 40, 50, 80, 100mm



Model FMD

(Double Acting, Double End Rod)

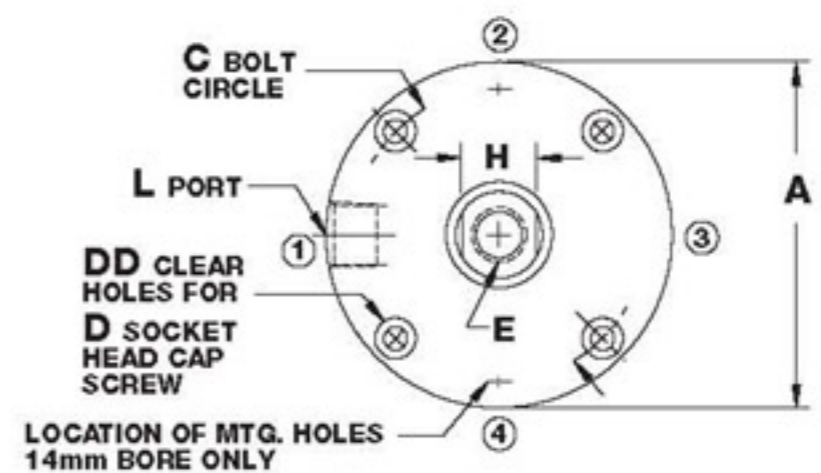
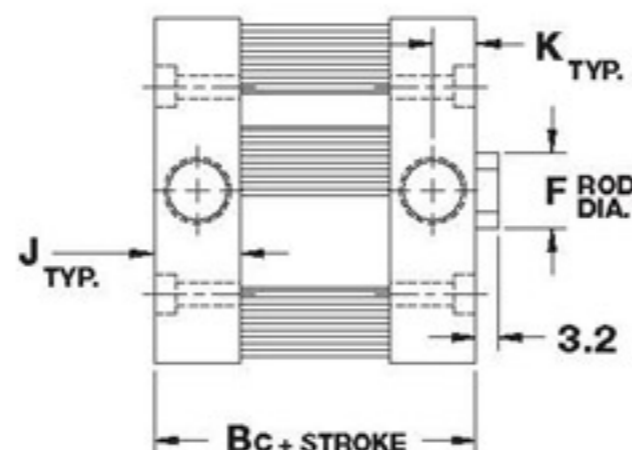
Standard strokes
3.2mm, 5, 10, 15, 20, 25, 30, 40, 50, 80, 100mm



Model FMS

(Single Acting, Spring Return, Rod Normally Retracted)

Standard strokes
3.2mm, 5, 10, 15, 20, 25, 30, 40, 50mm

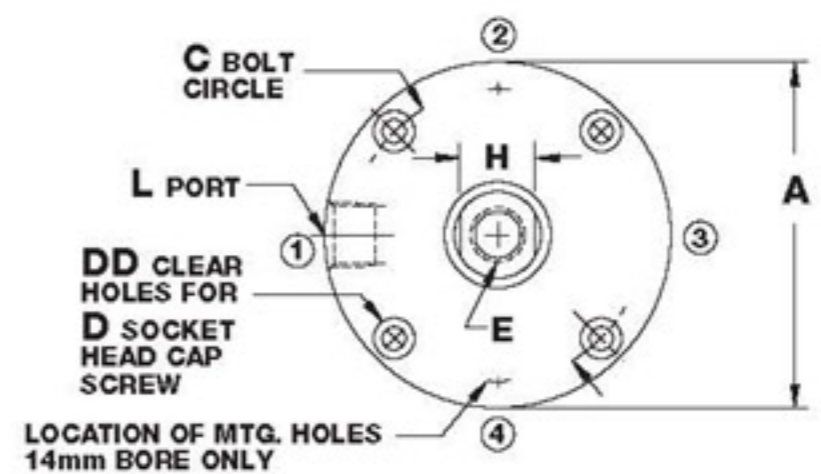
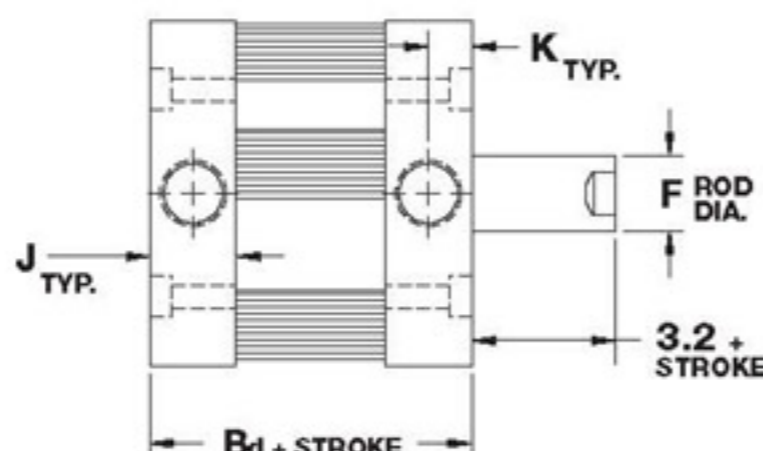


Contact Distributor for price and dimensions over 50mm stroke. See page 3.7 for spring forces.

Model FMR

(Reverse Acting, Spring Return, Rod Normally Extended)

Standard strokes
3.2mm, 5, 10, 15, 20, 25, 30, 40, 50mm



Contact Distributor for price and dimensions over 50mm stroke. See page 3.7 for spring forces.

Dimensions(mm)

(Basic Model)

Bore	A	Ba*	Bb*	Bc*		Bd*		C	DD	D	E Std.
				0-25mm	26-50mm	0-25mm	26-55mm				
14mm (02)	28.5	14.3	17.4	20.6	34.9	27.0	41.3	22.5	2	M3	M4
19mm (04)	38.0	14.3	17.4	20.6	34.9	27.0	41.3	31.0	4	M3	M5
27mm (09)	50.6	22.2	23.8	22.2	38.1	34.9	50.8	43.0	4	M3	M8
38mm (17)	66.4	22.2	25.4	22.2	38.1	34.9	50.8	56.0	4	M5	M10
50mm (31)	79.1	23.8	27.0	23.8	39.7	36.5	52.4	68.0	4	M5	M12
63mm (50)	95.0	30.2	33.3	30.2	52.4	49.2	88.9	83.0	4	M6	M12
76mm (70)	107.7	31.8	34.9	31.8	54.0	50.8	73.0	96.0	4	M6	M16
101mm (125)	139.5	39.7	42.9	39.7	61.9	58.7	81.0	125.0	4	M8	M20

Bore	E Fine	E Depth	F	H	J	K	L
14mm (02)	M4x0.5	11.7	6.3	5.5	8.7	3.6	M5
19mm (04)	M5x0.5	11.7	7.9	6.0	8.7	3.6	M5
27mm (09)	M8x1.0	17.8	12.7	11.0	12.7	6.4	G 1/8
38mm (17)	M10x1.25	17.8	15.9	12.0	12.7	6.4	G 1/8
50mm (31)	M12x1.25	17.8	19.1	16.0	13.5	6.4	G 1/8
63mm (50)	M12x1.25	17.8	19.1	16.0	16.7	8.3	G 1/8
76mm (70)	M16x1.5	18.5	22.2	19.0	17.5	8.3	G 1/8
101mm (125)	M20x1.5	20.3	25.4	22.0	21.4	10.7	G 1/4

*See page 3.6 for length adders for options.