



# Original Line<sup>®</sup> Cylinders

**Your configured part number: BFT-092-DB**  
**Additional accessories: (NO ACCESSORIES)**

### Features and Benefits

- **Maintenance Free Performance:**
  - Lubed for life w/proprietary synthetic blend grease
  - Blue and Improved design doubles previous cylinder life
- **Added Strength:**
  - Piston to rod connection is threaded, sealed, and riveted securely in place
  - Roll formed rod threads on both ends
  - Aluminum alloy piston with blow-by flats
- **Low Breakaway:**
  - Inflatable, wear compensating, U-cup rod and piston seals
  - Breakaway slots on each end cap for fast seal inflation

### Engineering Specifications

**Pressure Rating:** 250 PSI

**Temperature Range:**

Buna N seals: -20° F (-29° C) to 200° F (90° C)

Fluoroelastomer seals for high temperatures (up to 400° F) available

Magnetic piston option: max. operating temp. is 185° F

**Materials:**

Rod: High strength carbon steel and stainless steel available

Body: 304 stainless steel

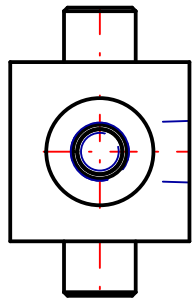
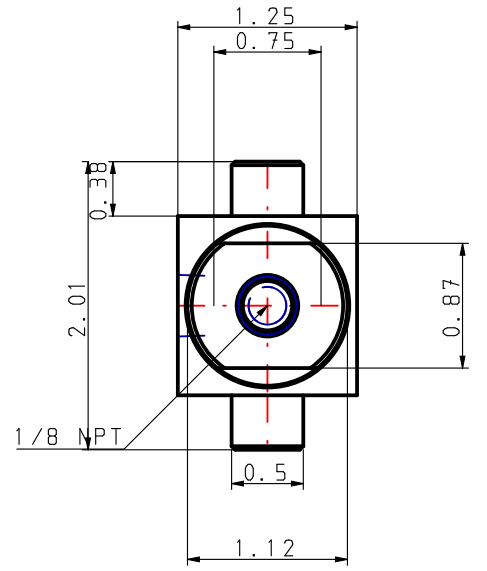
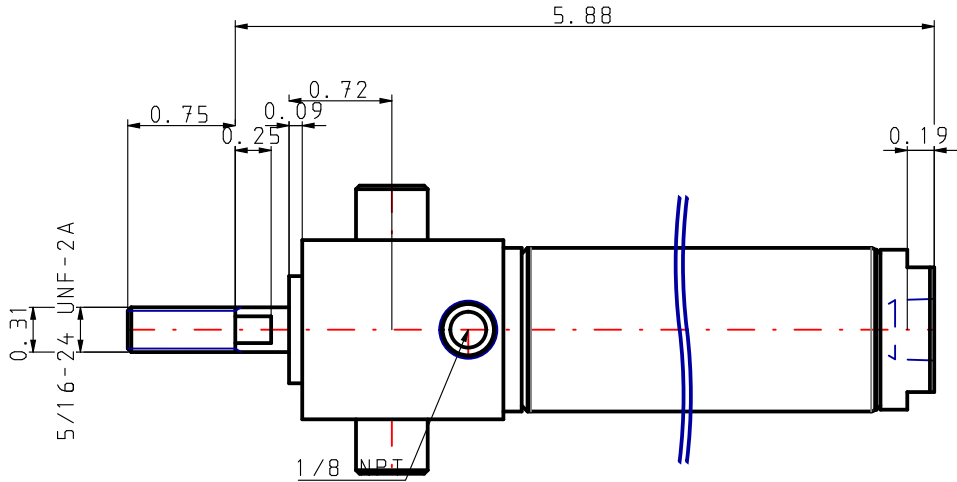
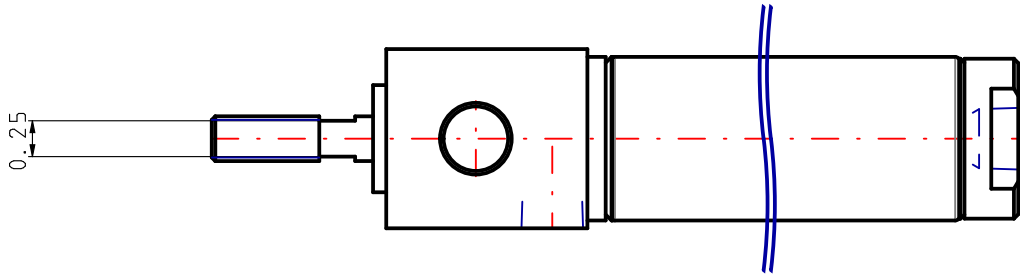
End Caps: 6061 aluminum (RoHS compliant)

Rod Bushings: Oil-impregnated bronze except (5/16", 7/16", 9/16" single acting)

### Service and Design Capabilities

- **Catalog models available in 4 days or less**
- **Custom design capabilities for your needs**
- **Common modifications include:**
  - Custom rod threads/lengths
  - Customer logo/part# on cylinder body
  - Additional standard port sizes/locations
  - Special lubricants (FDA approved, etc.)
  - Anodized or nickel plated end caps
  - Clean room design with Krytox lubrication
  - Special spring forces





BFT-092-DB

(NO ACCESSORIES)



**Neuma Corp.**

Taipei, Taiwan

Tel: +886 2 2290-0255

[www.neuma.com.tw](http://www.neuma.com.tw)

PROPRIETARY DRAWING - Reference Only