

## 標準接頭 (黑) Tube Fitting (Black)

**PCF<sub>G</sub>**

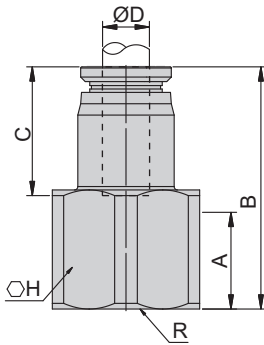
內牙直型  
Female Straight

\$P01

3D  
CAD

2D  
CAD

單位(Unit): m/m



Model 型式	Tube dia. ØD 管外徑	A	R	B	C	H	Mass(g) 重量	Orifice 流量孔徑
PCF4-M5	4	5.5	M5X0.8	19.4	12.4	8	4.8	3
PCF4-01G		8.5	G1/8	22.4	12.4	13	10.2	3
PCF4-02G		11	G1/4	24.9	12.4	17	18.2	3
PCF6-01G	6	8.5	G1/8	24.2	14.2	13	11.4	4.8
PCF6-02G		11	G1/4	26.7	14.2	17	19	4.8
PCF8-01G	8	9	G1/8	29	18.5	14	17.4	6.8
PCF8-02G		11	G1/4	31	18.5	17	24.2	6.8
PCF8-03G		11	G3/8	31	18.5	21	32.2	6.8
PCF10-02G	10	11	G1/4	33.1	20.6	17	27.8	8.5
PCF10-03G		11	G3/8	33.1	20.6	21	37.1	8.5
PCF10-04G		15	G1/2	36.8	20.3	24	45.8	8.5
PCF12-03G	12	11	G3/8	35.7	23.2	21	47	10.5
PCF12-04G		15	G1/2	39.7	24.1	24	55.4	10.5

## 標準接頭 (白) Tube Fitting (Ivory)

**PCF<sub>G</sub>**

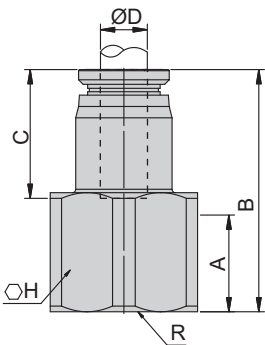
內牙直型  
Female Straight

\$P04

3D  
CAD

2D  
CAD

單位(Unit): m/m



Model 型式	Tube dia. ØD 管外徑	A	R	B	C	H	Mass(g) 重量	Orifice 流量孔徑
PCF4-M5-W	4	5.5	M5	19.4	12.4	8	4.8	3
PCF4-01G-W		8.5	G1/8	22.4		13	10.2	3
PCF4-02G-W		11	G1/4	24.9		17	18.2	3
PCF6-01G-W	6	8.5	G1/8	24.2	14.2	13	11.4	4.8
PCF6-02G-W		11	G1/4	26.7		17	19	4.8
PCF8-01G-W	8	9	G1/8	29	18.5	14	17.4	6.8
PCF8-02G-W		11	G1/4	31		17	24.2	6.8
PCF8-03G-W		11	G3/8	31		21	32.2	6.8
PCF10-02G-W	10	11	G1/4	33.1	20.6	17	27.8	8.5
PCF10-03G-W		11	G3/8	33.1		21	37.1	8.5
PCF10-04G-W		15	G1/2	36.8		24	45.8	8.5
PCF12-03G-W	12	11	G3/8	35.7	23.2	21	47	10.5
PCF12-04G-W		15	G1/2	39.7		24	55.4	10.5

**PCF<sub>G+NI</sub>**

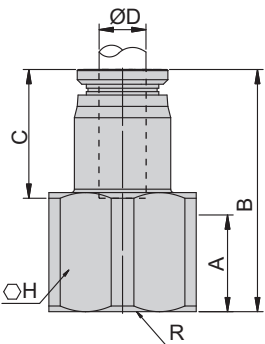
內牙直型  
Female Straight

\$P04

3D  
CAD

2D  
CAD

單位(Unit): m/m



Model 型式	Tube dia. ØD 管外徑	A	R	B	C	H	Mass(g) 重量	Orifice 流量孔徑
PCF4-M5-NI	4	5.5	M5	19.4	12.4	8	5.4	3
PCF4-01G-NI		8.5	G1/8	22.4		13	10.8	3
PCF4-02G-NI		11	G1/4	24.9		17	18.8	3
PCF6-01G-NI	6	8.5	G1/8	24.2	14.2	13	11.8	4.8
PCF6-02G-NI		11	G1/4	26.7		17	19.4	4.8
PCF8-01G-NI	8	9	G1/8	29	18.5	14	18.6	6.8
PCF8-02G-NI		11	G1/4	31		17	25.4	6.8
PCF8-03G-NI		11	G3/8	31		21	33.4	6.8
PCF10-02G-NI	10	11	G1/4	33.1	20.6	17	29.8	8.5
PCF10-03G-NI		11	G3/8	33.1		21	39.6	8.5
PCF10-04G-NI		15	G1/2	36.8		24	47.8	8.5
PCF12-03G-NI	12	11	G3/8	35.7	23.2	21	50.8	10.5
PCF12-04G-NI		15	G1/2	39.7		24	59	10.5

備註 Note G: 管用直牙 (PF直牙) G: BSPP Thread  
NI: 金屬脫離環 NI: Release Ring (Metallic Body)